

**654 ADAMS STREET**  
HOLLISTON, MASSACHUSETTS

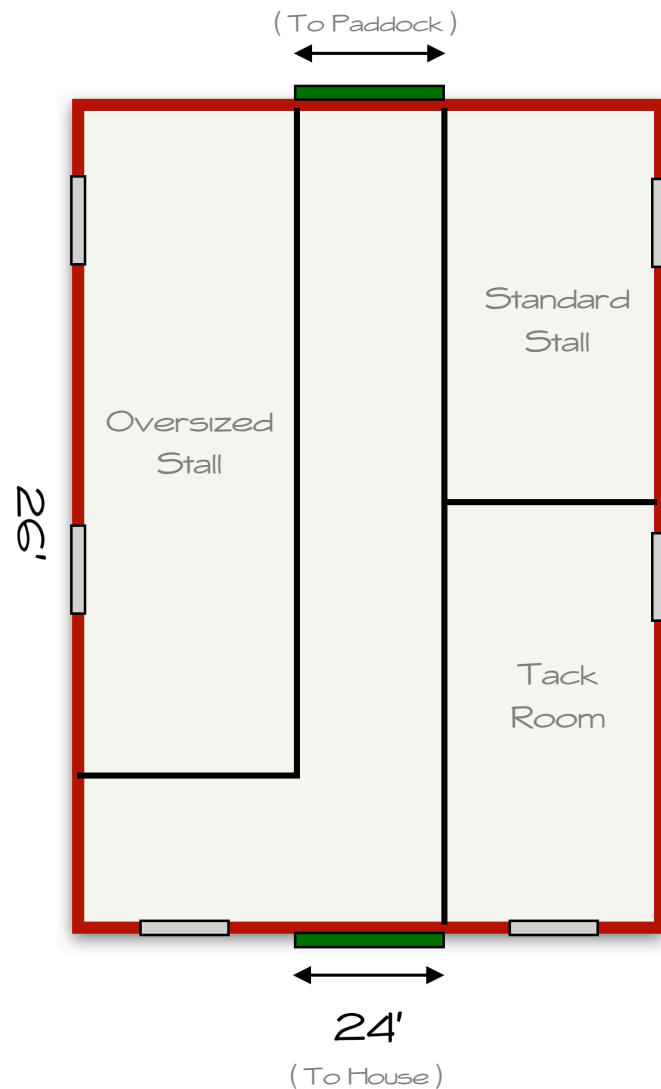
APPROXIMATE SQUARE FOOTAGE:

FIRST FLOOR  
SECOND FLOOR  
LOWER LEVEL  
TOTAL:

864 SF  
936 SF  
572 SF  
2,372 SF

All dimensions and square footage are approximate. Not drawn to scale. Floor plans are presented for marketing purposes only. Buyer should perform due diligence.  
©2019 www.MPL-photo | 617.828.4127





BARN

654 ADAMS STREET  
HOLLISTON, MASSACHUSETTS

PROPERTY FEATURES A DETACHED  
2-STALL BARN APPROX. 24' X 26' WITH:

- OVERSIZED STALL
- STANDARD STALL
  - TACK ROOM
- ROOM FOR HAY STORAGE ABOVE

All dimensions and square footage are approximate. Not drawn to scale. Floor plans are presented for marketing purposes only. Buyer should perform due diligence.  
©2019 www.MPL-photo | 617.828.4127



Page  
2 of 2