



FIRST FLOOR

55 DEPOT ROAD
 BOXFORD, MASSACHUSETTS

APPROXIMATE SQUARE FOOTAGE:
 First Floor: 1,925 SF
 Second Floor: 1,816 SF
 Lower Level: 914 SF
 Total Square Footage: 4,655 SF

All dimensions and square footage are approximate. Not drawn to scale. Floor plans are presented for marketing purposes only. Buyer should perform due diligence to verify.
 ©2024 MPL.photo
 617.828.4127 phone





SECOND FLOOR

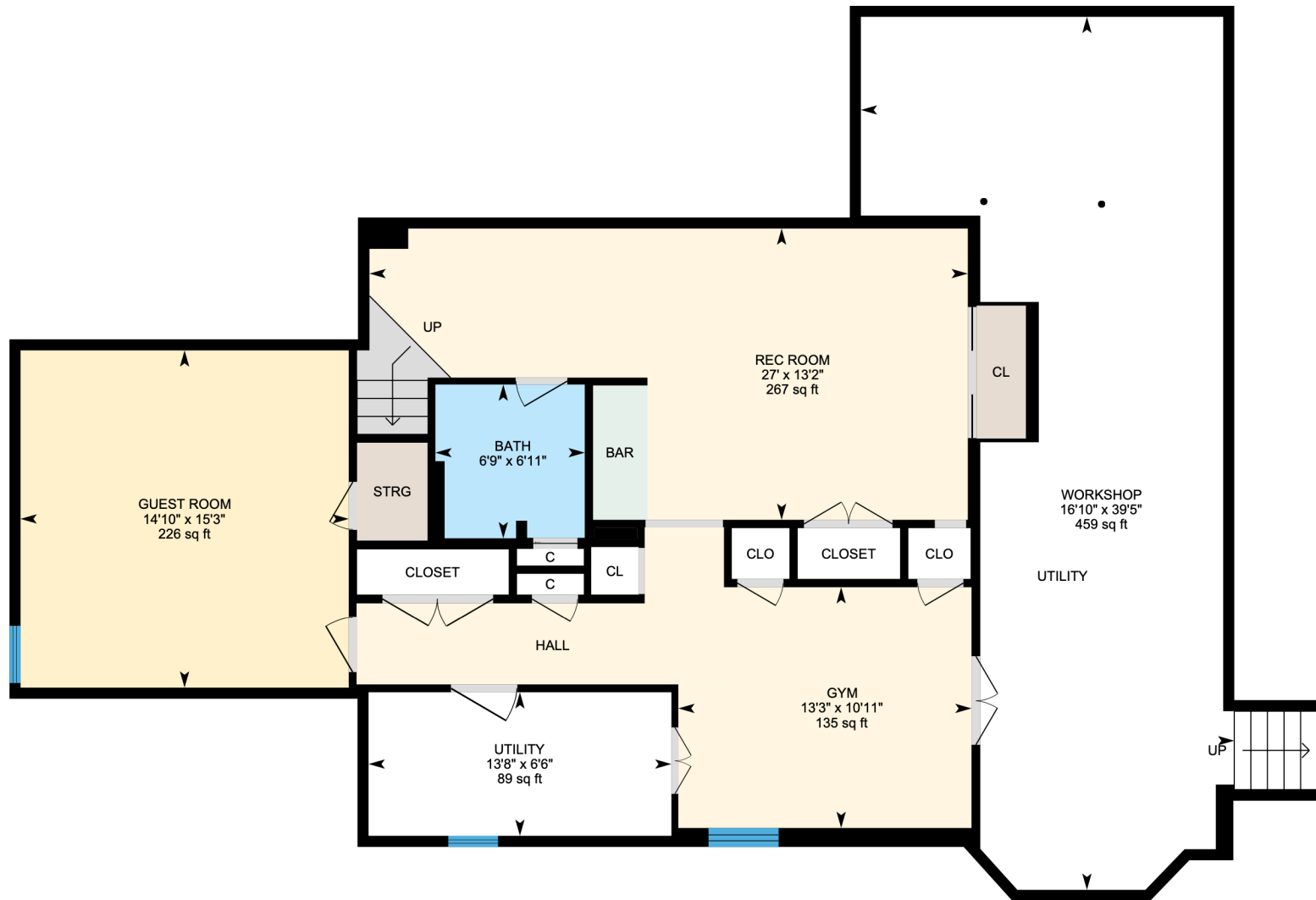
55 DEPOT ROAD
 BOXFORD, MASSACHUSETTS

APPROXIMATE SQUARE FOOTAGE:

First Floor: 1,925 SF
 Second Floor: 1,816 SF
 Lower Level: 914 SF
 Total Square Footage: 4,655 SF

All dimensions and square footage are approximate. Not drawn to scale. Floor plans are presented for marketing purposes only. Buyer should perform due diligence to verify.
 ©2024 MPL.photo
 617.828.4127 phone





LOWER LEVEL

55 DEPOT ROAD
 BOXFORD, MASSACHUSETTS

APPROXIMATE SQUARE FOOTAGE:

First Floor: 1,925 SF
 Second Floor: 1,816 SF
 Lower Level: 914 SF
 Total Square Footage: 4,655 SF

All dimensions and square footage are approximate. Not drawn to scale. Floor plans are presented for marketing purposes only. Buyer should perform due diligence to verify.
 ©2024 MPL.photo
 617.828.4127 phone

N

